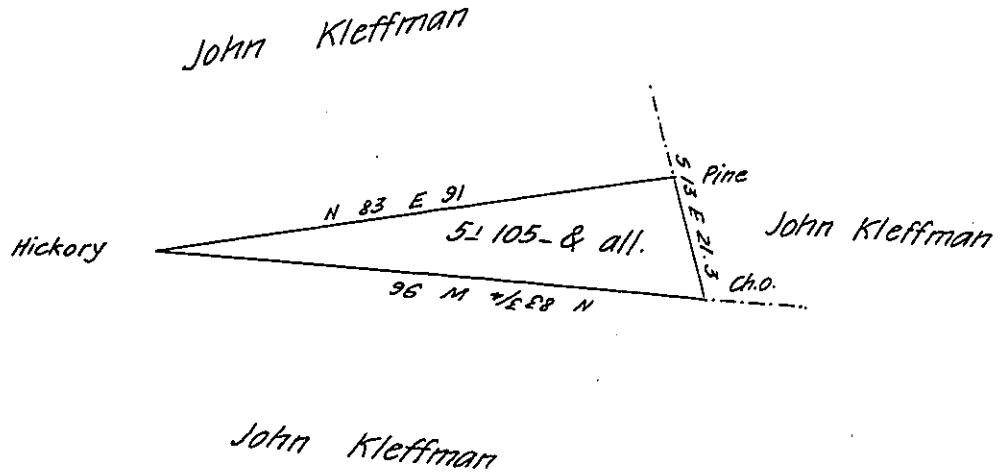


Base line 96 Perches  
 Perpendicular ht 20 "  
 2) 1920  
 169.6) 960.0  $\angle 5^{\circ} 105^{\circ}$   
 8480  
 106) 1120  
 106  
 600  
 530  
 70



Draught of five acres and one hundred and five perches with six per cent allowance situated in Delaware Township Juniata County and State of Pennsylvania Surveyed February 16<sup>th</sup> 1854 on a warrant to John Kleffman dated February 2<sup>nd</sup> 1854 for nine acres. per

To J. P. Brawley Esq.

G. W. Jacobs C. S.

Surveyor Genl Pa.

Harrisburg Pa.

Note the above is all unimproved.

G. W. J.

IN TESTIMONY that the above is a copy of the original remaining on file in the Department of Internal Affairs of Pennsylvania, made conformably to an Act of Assembly approved the 16th day of February, 1833, I have hereunto set my Hand and caused the Seal of said Department to be affixed at Harrisburg, this seventh day of February 1908

*Henry Howell*

Secretary of Internal Affairs.